

Software Installation and Use Instructions

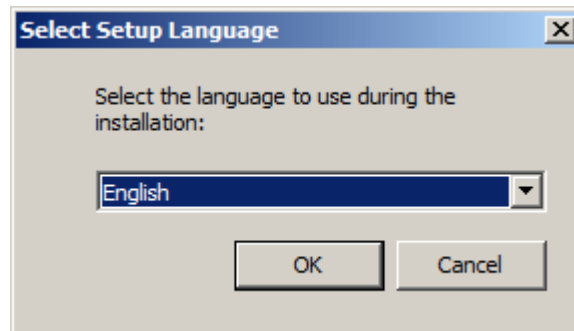


Start.exe
Autorun
Euro Plus d. o. o.

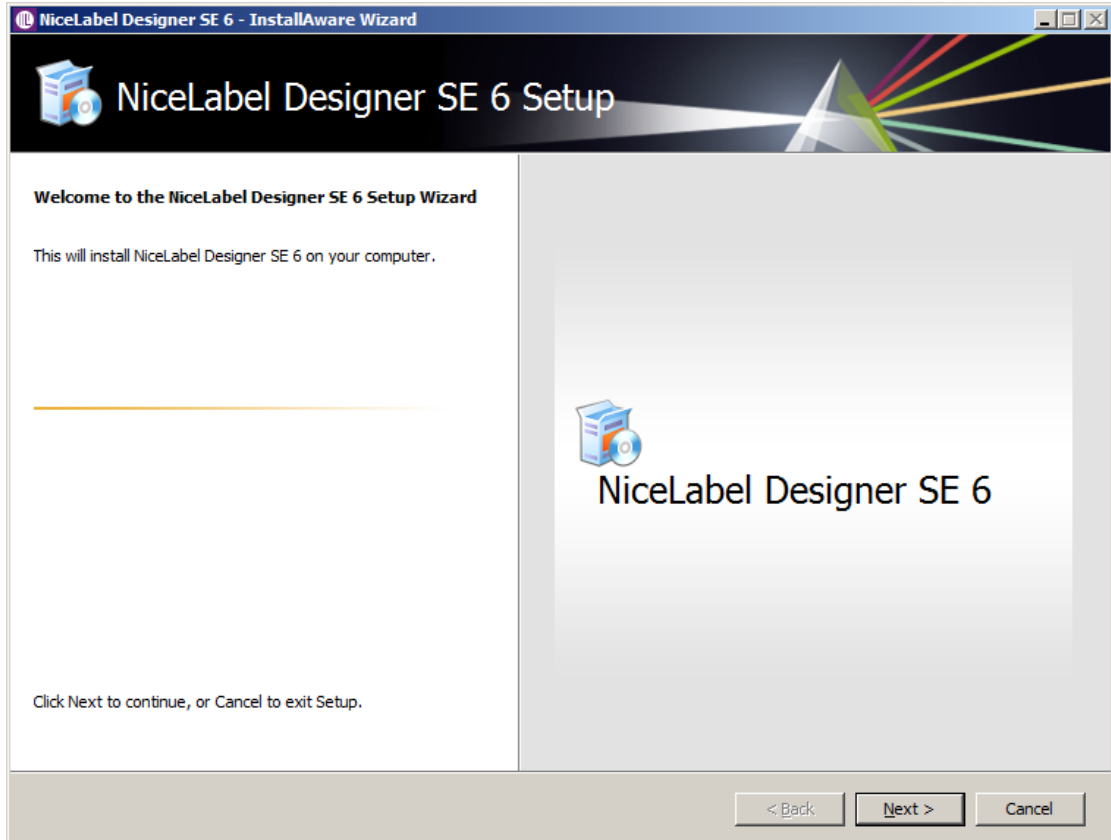
Please run as below:



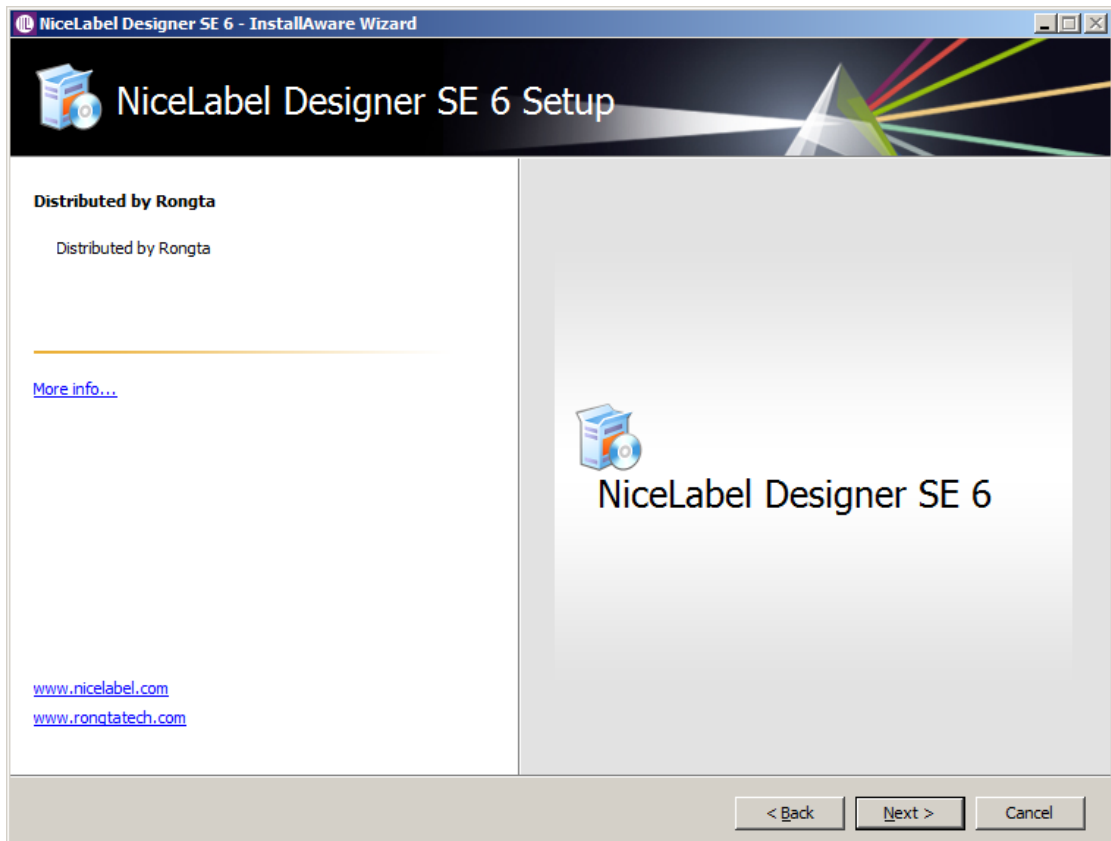
Please click “Install NiceLabel product” to install the label printer software



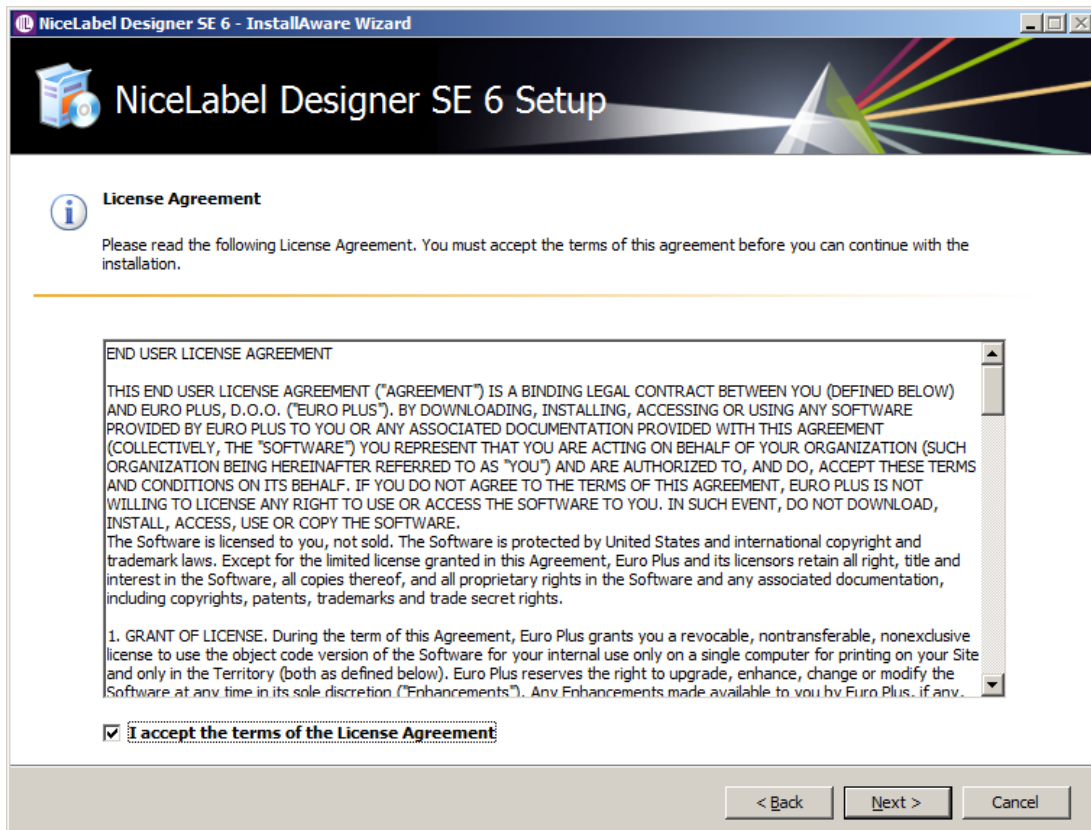
Please choose the language for the installation application.



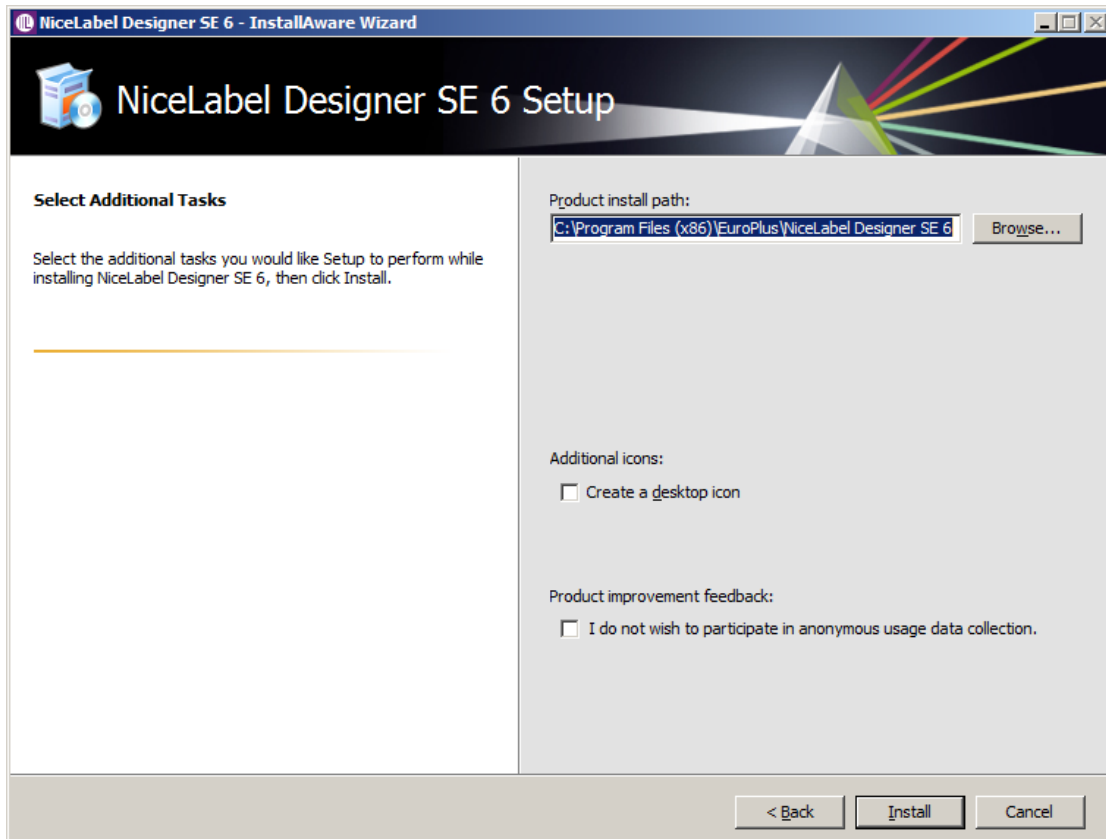
Click "Next"



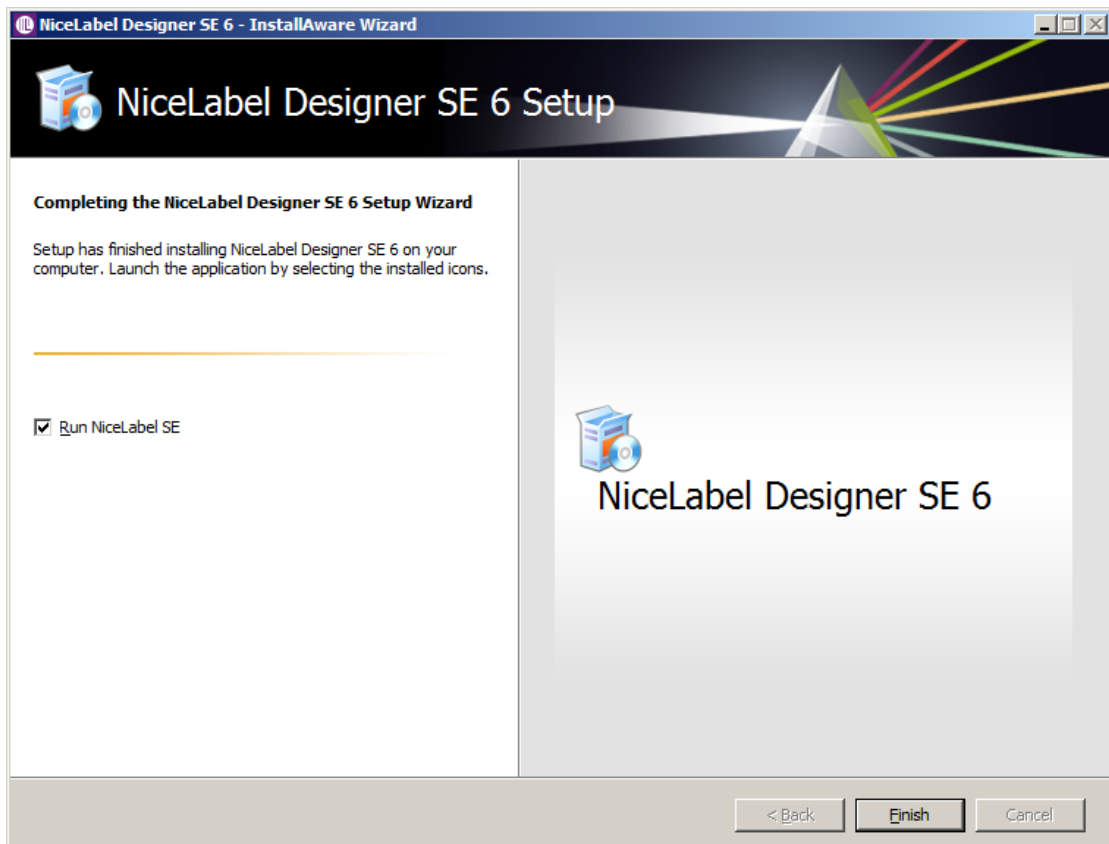
Please click “Next” to check License Agreement.



Choose “I accept the terms of the License Agreement”, and then click “Next”.



Please choose product install path and icon, then click “Install”, now wait the installation to be finished.



Please choose to run the application and click “finish”, till now the installation is finished.



Please click “Continue” to the welcome guide.

Product Registration

User Information
Enter user information.

Please enter your information. Note that fields marked with * are required.

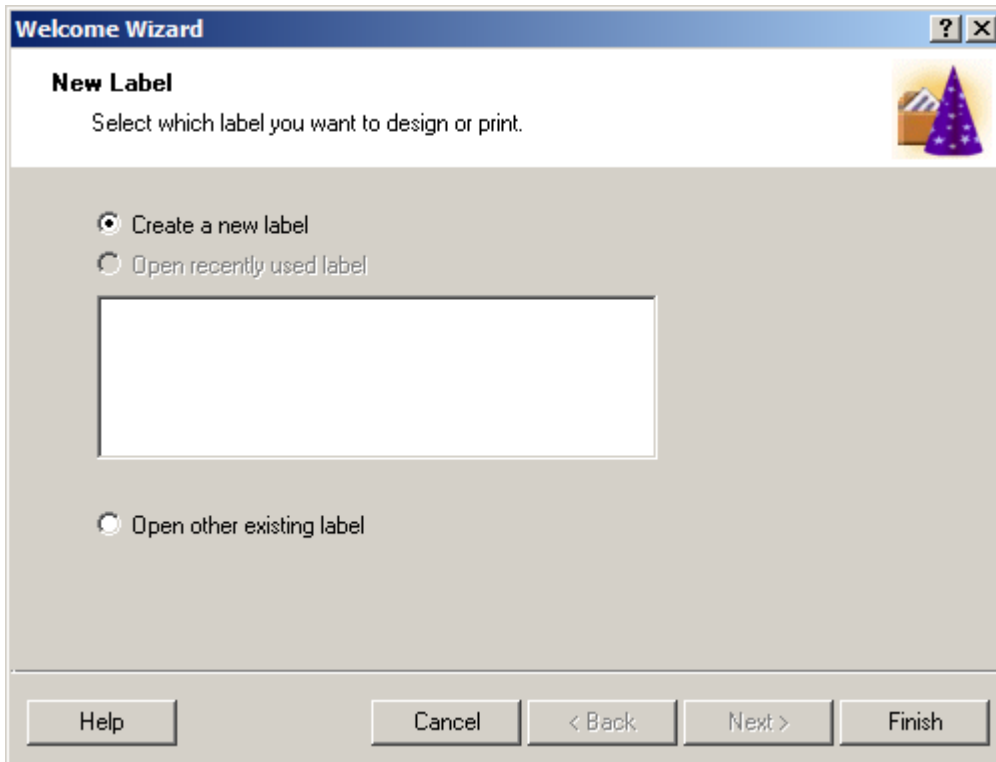
Name *

Company *

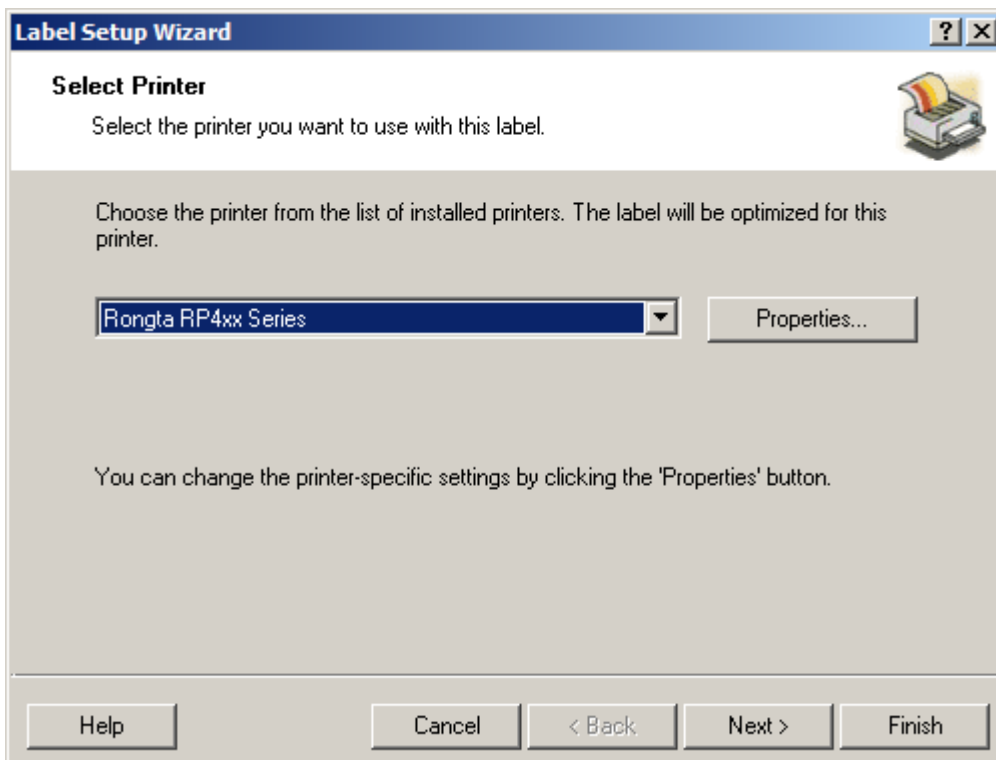
Country *

E-mail *

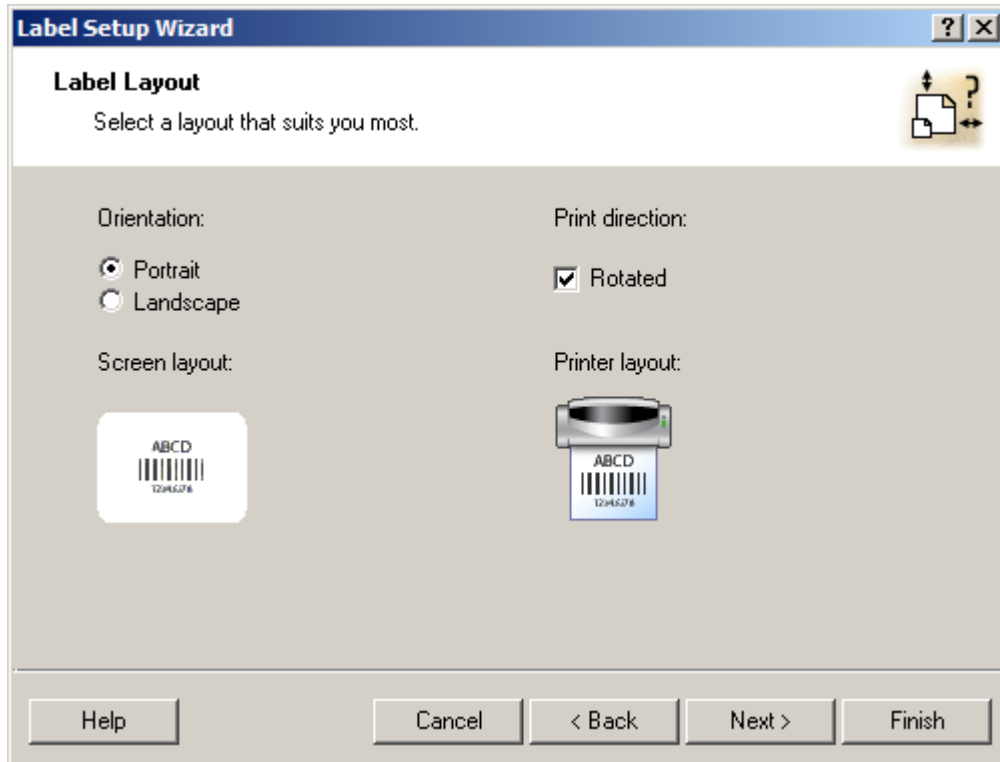
Cancel < Back Next > Finish



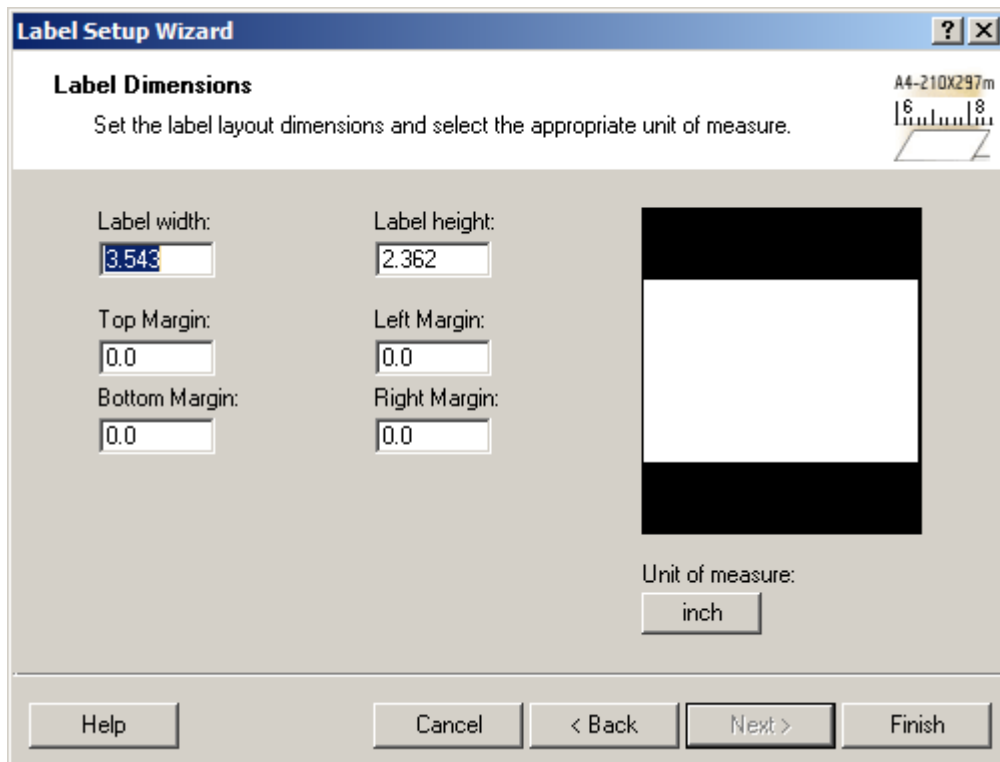
Please choose “create new label”, then click “finish”



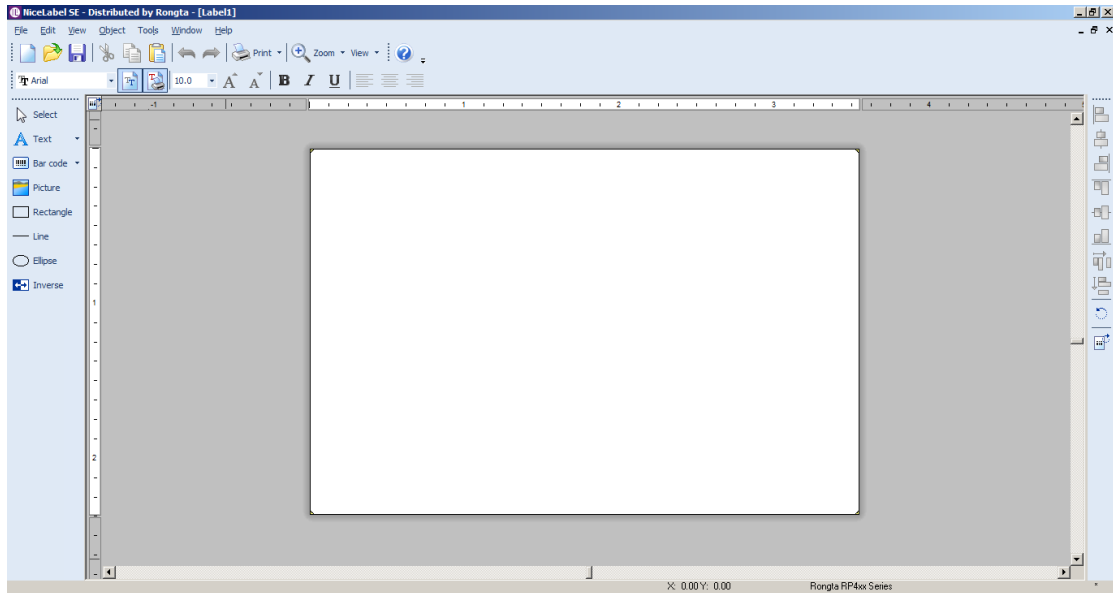
The printer software will search the driver list and screen out GP series driver to use. The balance will be automatically blocked. Now choose vertically or horizontally printing. Please click “Next”



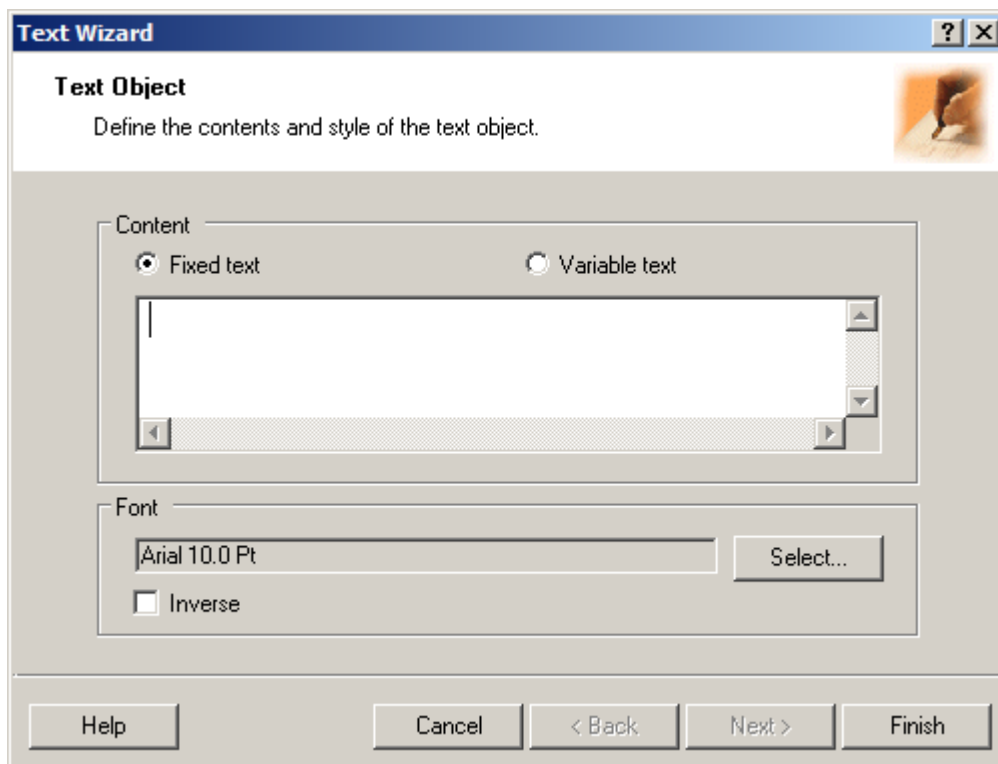
Click “Next”



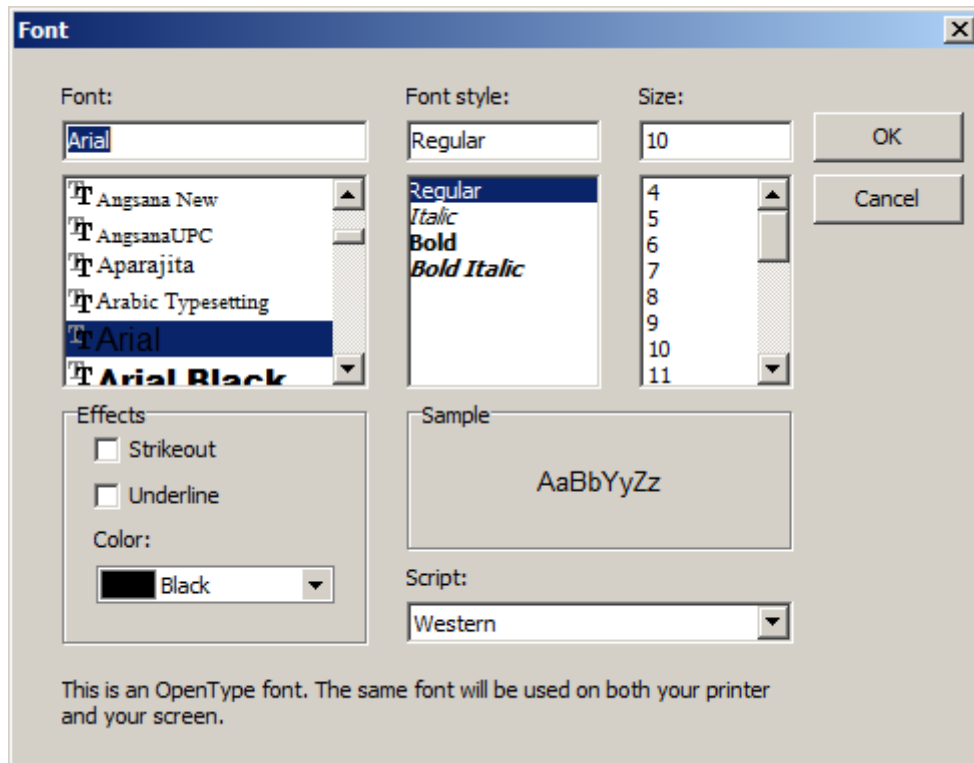
To define the size of the label in the label setup guide. For example, size 40 mm X 30 m, please enter 4 into the label width, and enter 3 into the label height. It can also be adjusted according to the needs. Click “finish”, and then go to the editing interface.



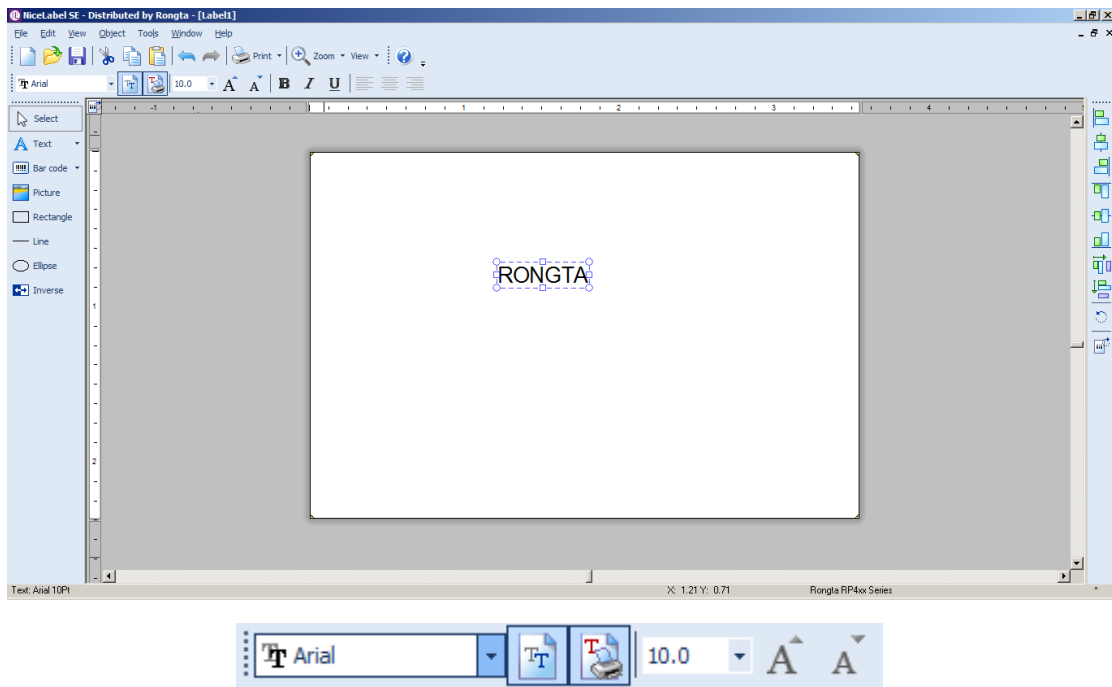
In the left side toolbar, there are many items can be edited, such as “text”, “barcode”, “picture”, “rectangle”, “straight line”, “ellipse”, “inverse”.

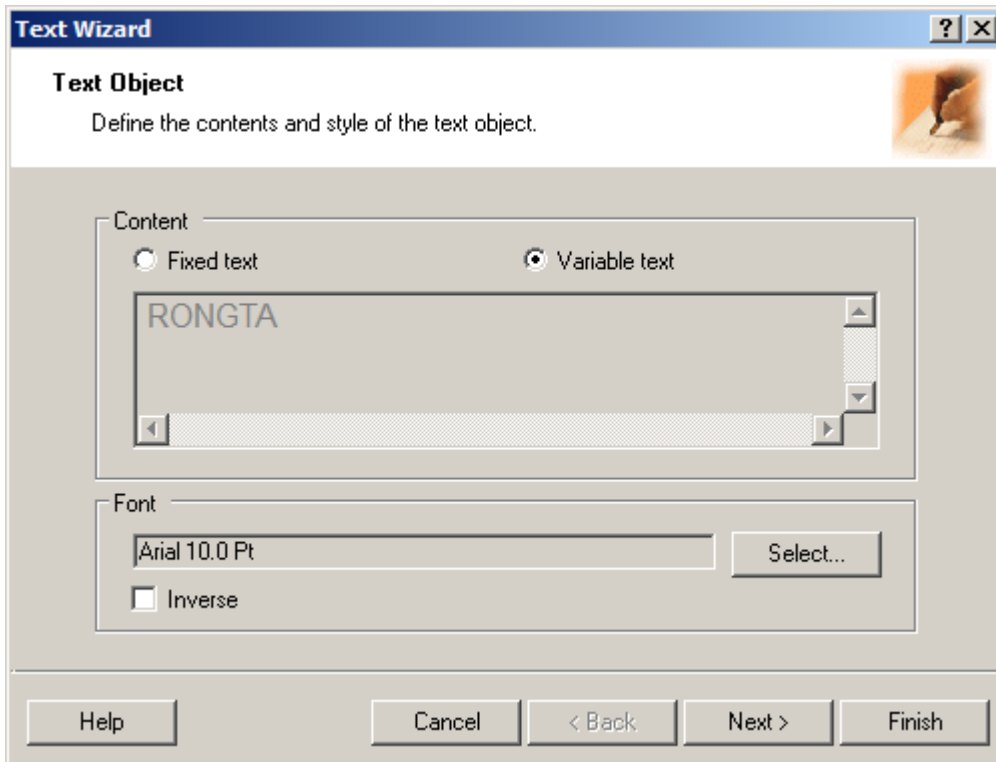


Click “text”, it comes out a capital “A”. Then choose the editing place, the Font guide comes out. See as below:

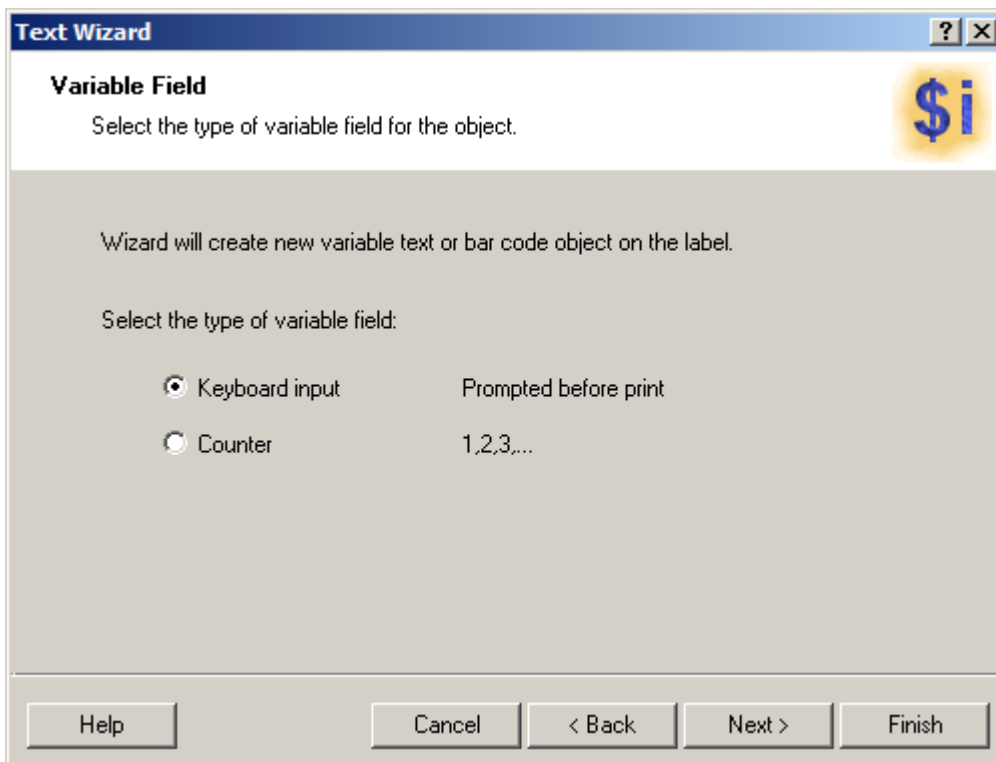


Continue to adjust font type and size through TEXT in menu bar.



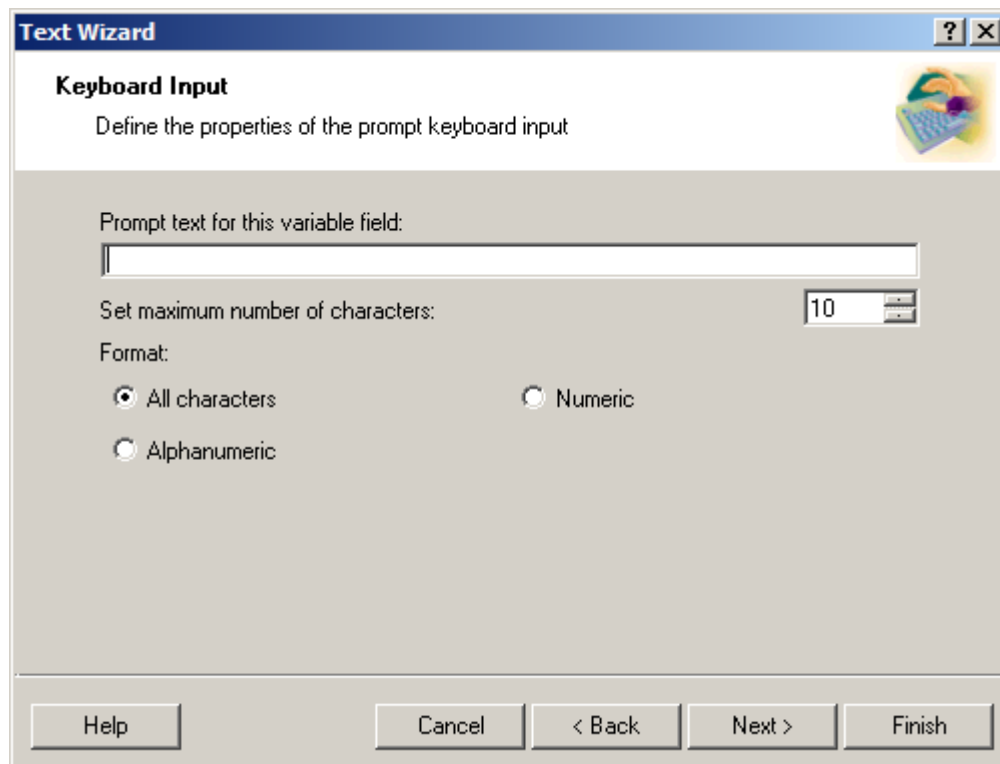


If selecting “variable text” in Content, select font type, then click next.



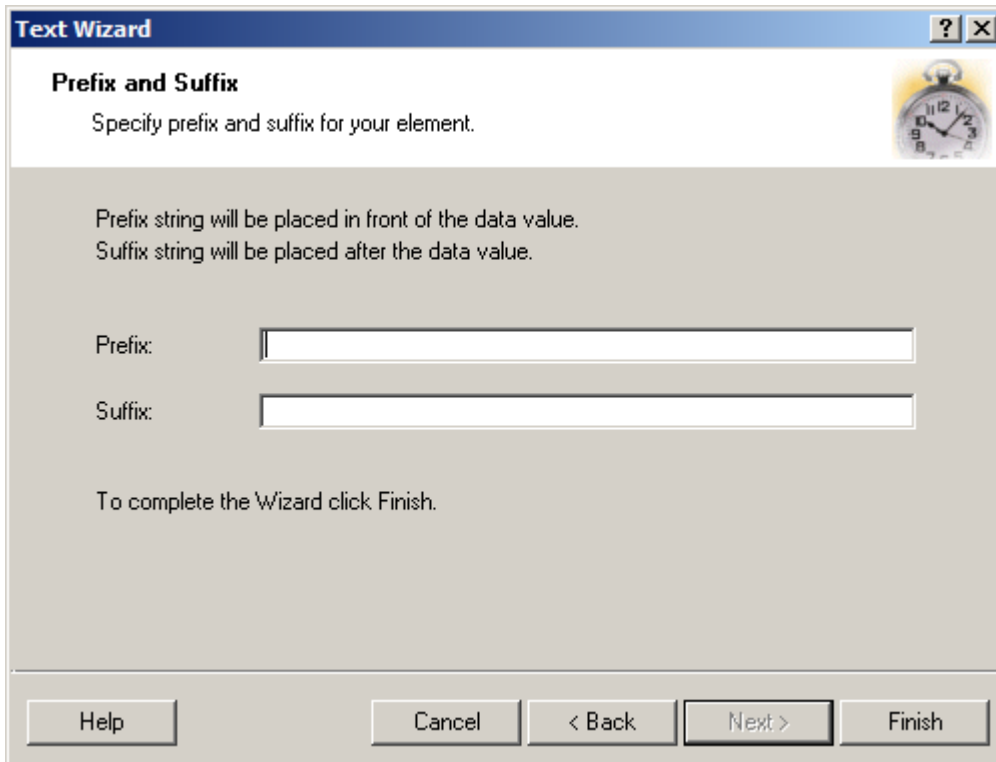
There are two options, “keyboard input” means that when send print task to printer, software will give user a prompt, the printing characters in TEXT are input by

user through keyboard, not fixed. “Counter” can use software’s accumulation function to achieve the result of digital accumulation.

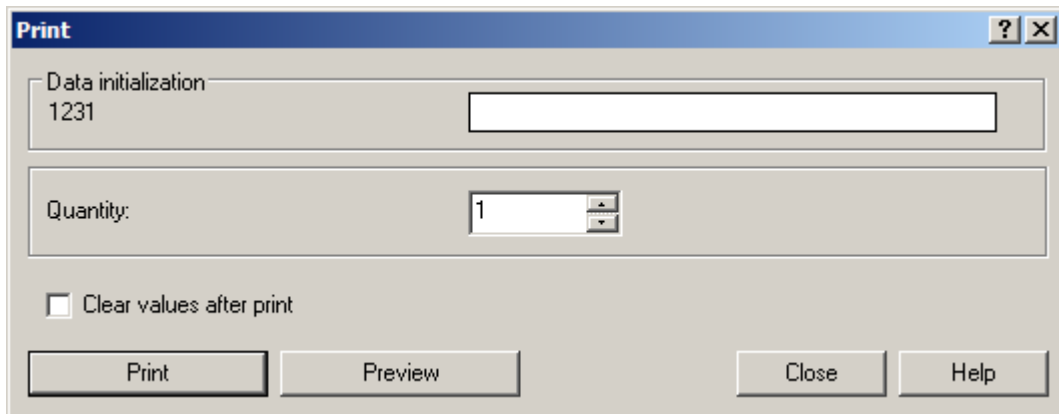


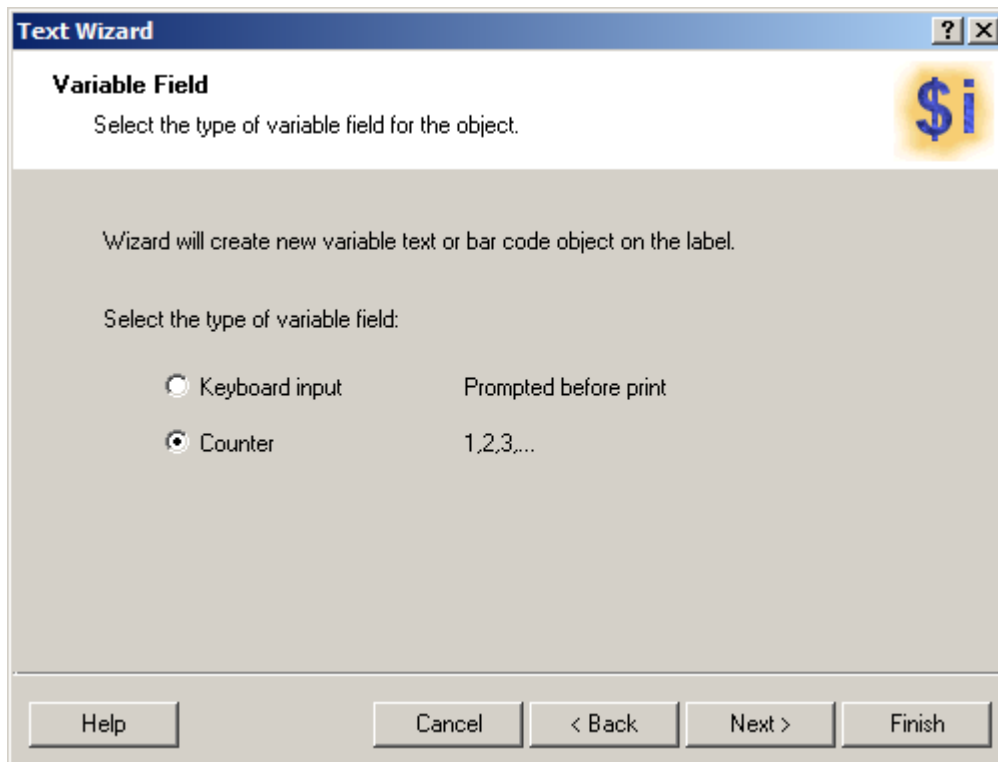
The image shows a screenshot of a software dialog box titled "Text Wizard". The window has a blue title bar with a question mark icon and a close button. The main content area is titled "Keyboard Input" and contains the instruction "Define the properties of the prompt keyboard input". Below this, there is a text input field labeled "Prompt text for this variable field:". To the right of this field is a spin box labeled "Set maximum number of characters:" with the value "10" displayed. Underneath, there is a "Format:" section with three radio button options: "All characters" (which is selected), "Alphanumeric", and "Numeric". At the bottom of the dialog, there are five buttons: "Help", "Cancel", "< Back", "Next >", and "Finish".

Keyboard input wizard need to fill in prompt text, for example, prompt to input “product name”, then write “product name” in text, can set “max character” and “format” .

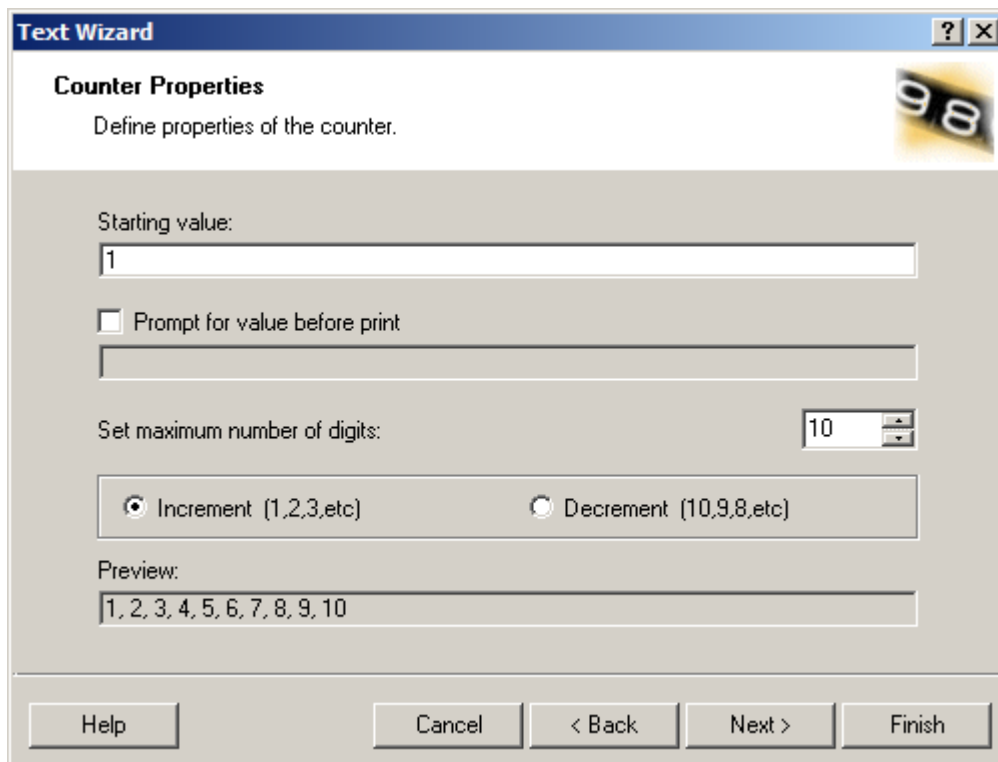


“prefix” and “suffix” can fill in if need, after finished, will display “? ? ? ? ?” in label editor screen, click “print” , there will add a new input text bar, and can check “clear variable” , as below picture:



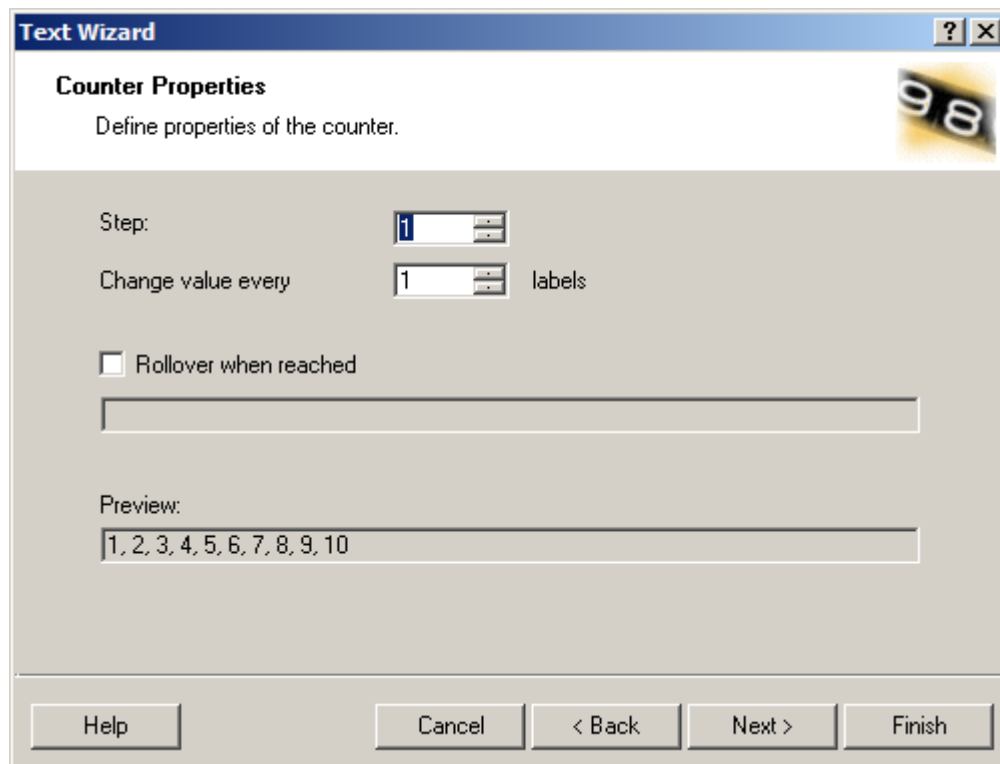


Click “Next” to set Counter method.

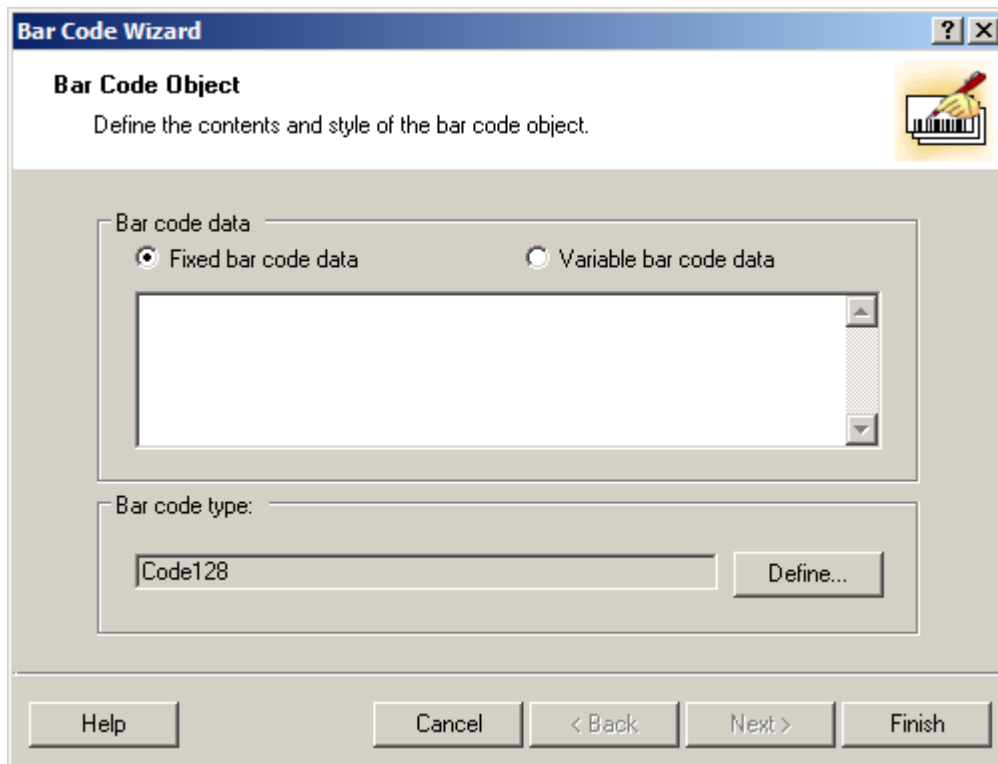


Here can set “Starting value”, if check “prompt value before print” , can input initial value when printing like keyboard input text, “set max digit” means max

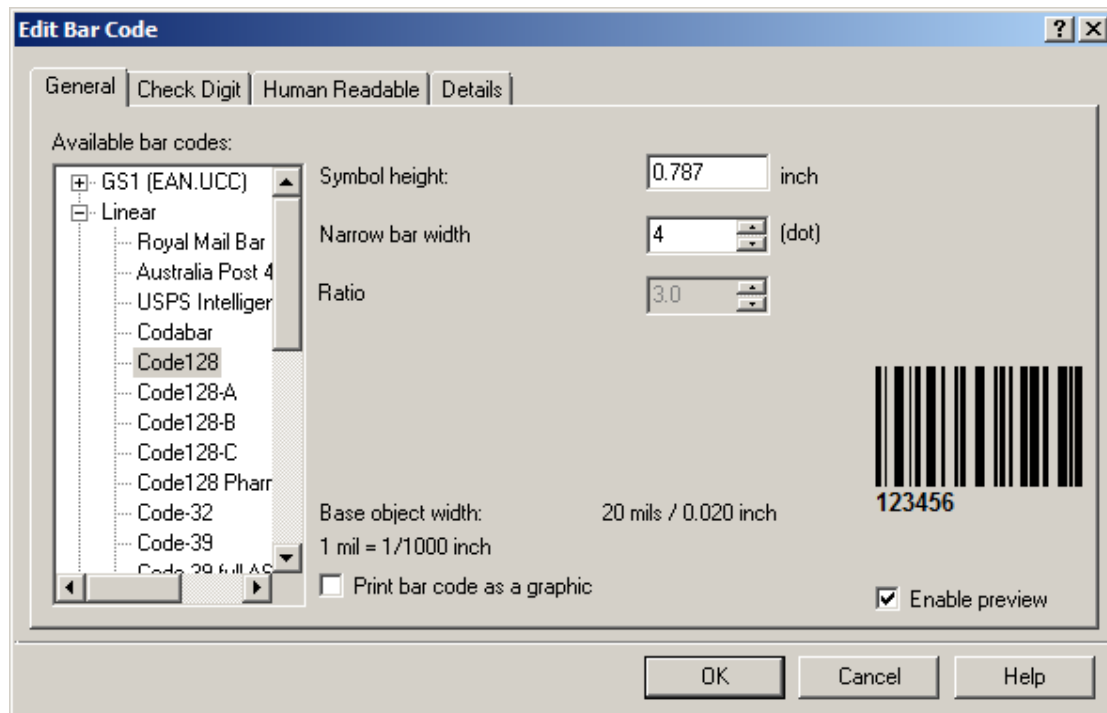
numbers, can select “ increase” or “decrease” method, “preview” can see the change of value, click “Next” .



“Interval” fills in every increasing or decreasing number, “Every few labels to change a value” fill in label quantity of every numerical value you need to print. “Reach limit value to recount” column can be checked to input a limit value, every time when reaches the limit value, it will recount circularly. After setting the parameters, you can see from “preview” how the numbers will change. In the next step, prefix and suffix are consistent with what the keyboard inputs, then you can see “????” typeface from label interface. Click “print” to print several labels to see the actual effect.

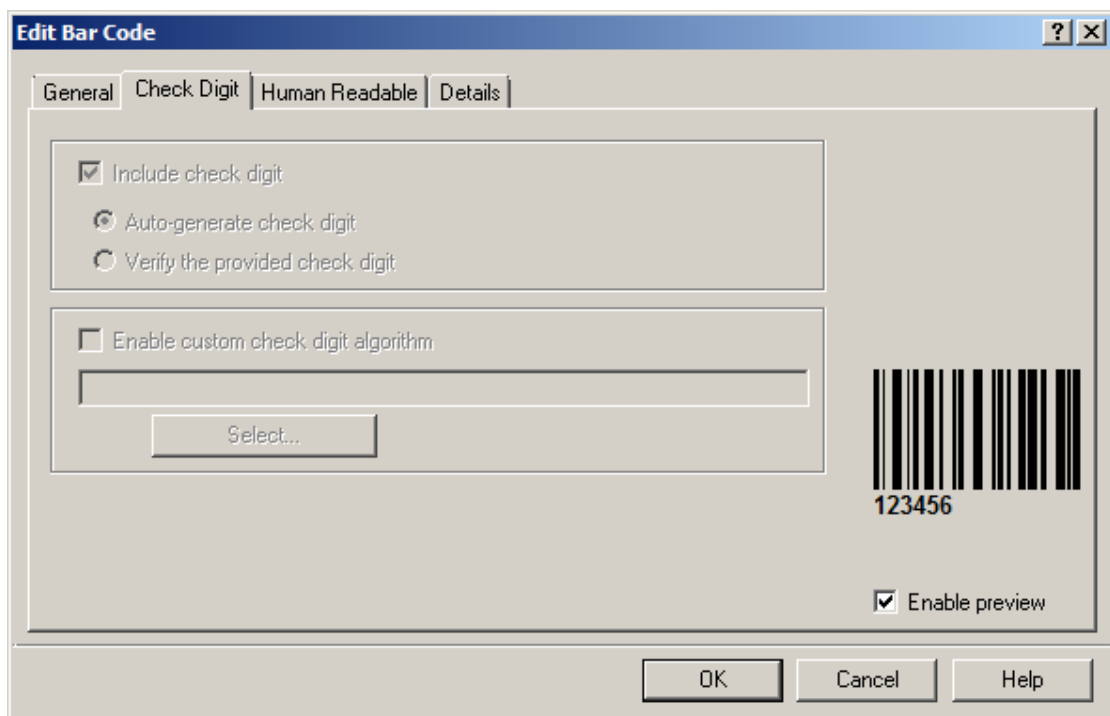


Click left “barcode” column, the mouse will change to a barcode shape. Click a place on barcode editing interface where you would like to put barcodes, there comes out a “barcode wizard” . This wizard is just the same as that of “font” .

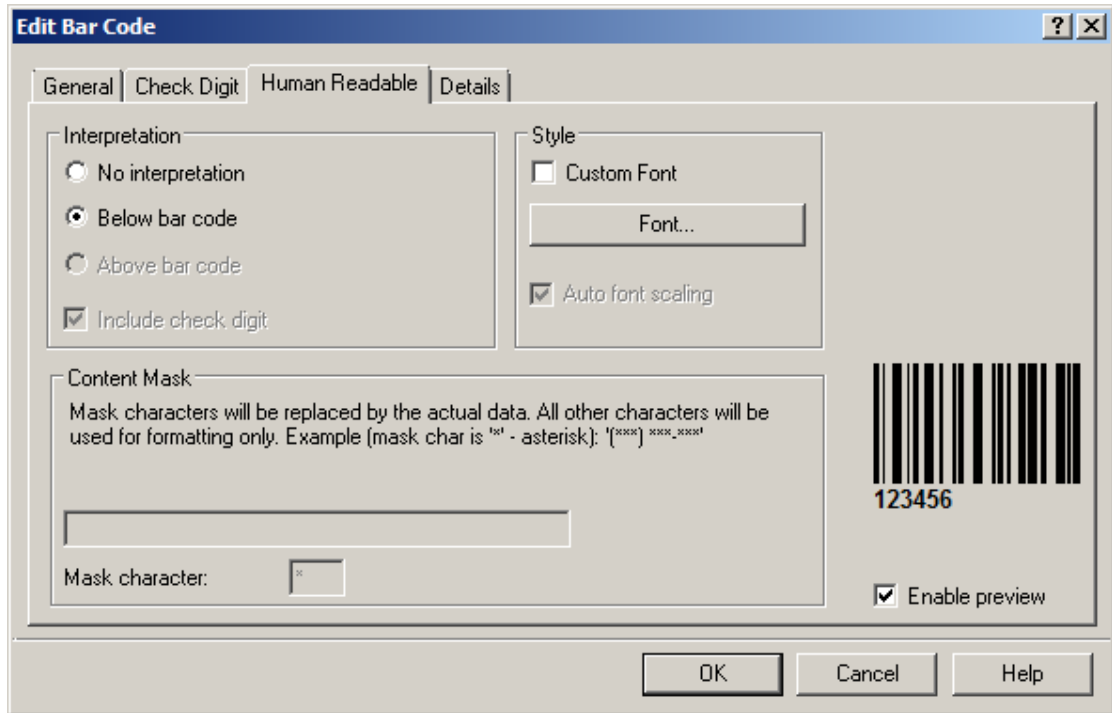


In “available bar code” column there are four general categories, "GS1" is for fixed-length commodity bar code, this kind of bar code is for standard, international general fixed-length goods or cargo; "Linear" is for longer bar code, this kind of barcode can have different number of coding, more flexible in use; "GS1 Databar" is the extension of GS1 international standard code, you can use both longer length coding and mixed coding; "2 D" is for QR Code.

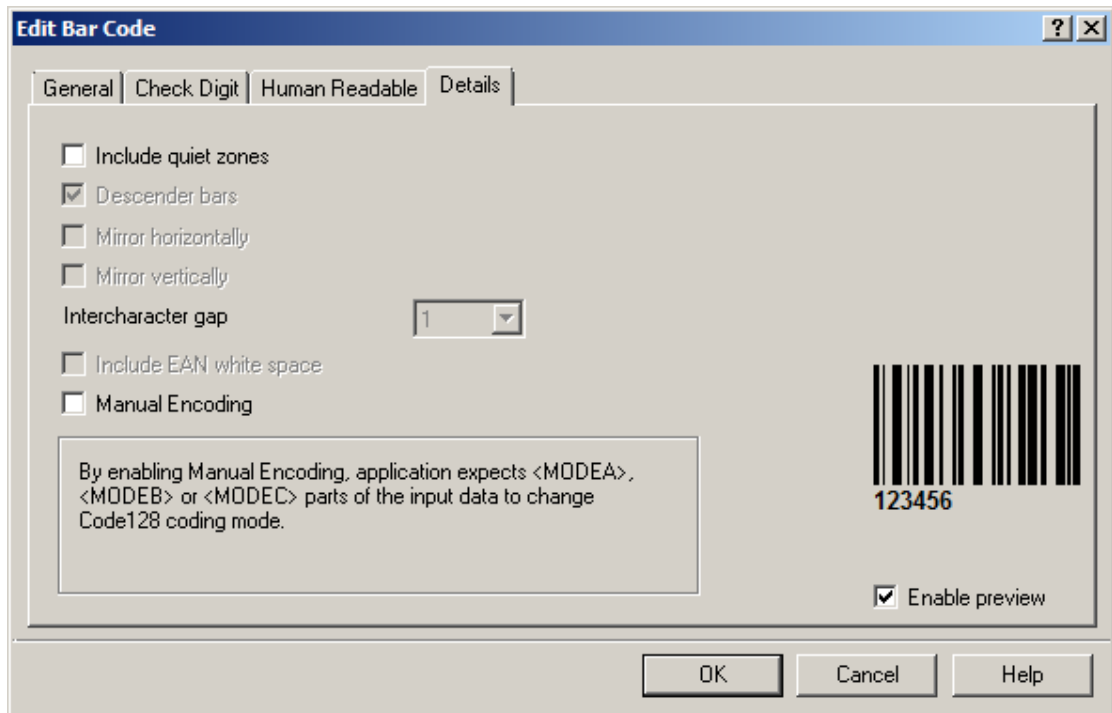
Fill in the decimal number to “symbol height”, you can set the height of bar code. “Narrow bar width” can specified the barcode narrow black bars width. According to the setting of “rate” column, you can determine the general width of each barcode; each kind of bar code has a different narrow-width rate. After checked "print bar code by graphics ", the software will print the barcode as a graphic; if not checked, then will printer the barcode by instruction. There is a portion of the bar code does not support instruction print, so graphics mode will be checked in mandatory.



Some Barcode in “check digit” can choose using “check digit” or not, and can let the software make the bar code automatically or user can check the “check digit” by themselves, also can enable the “custom check digit” .

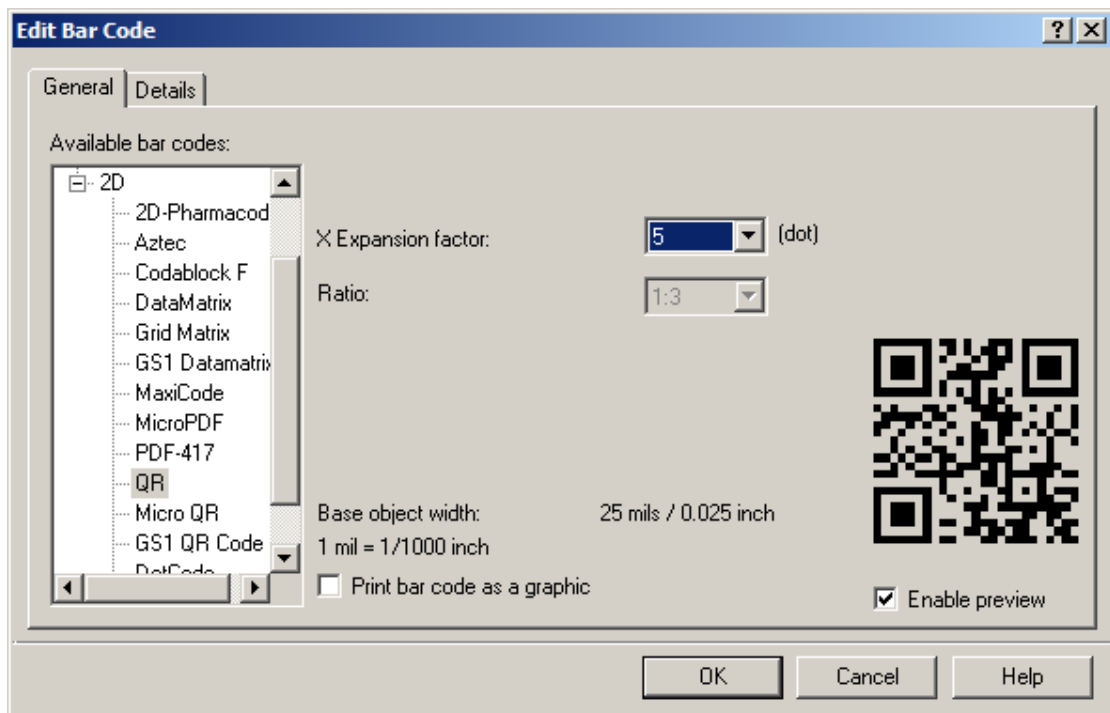


You can choose not printing out human readable bar code also put it upside the bar code or below the bar code or printing out check digit or not under the “interpretation” which under the human readable bar code; And you can custom the form and sizes of human readable bar code understand the form.

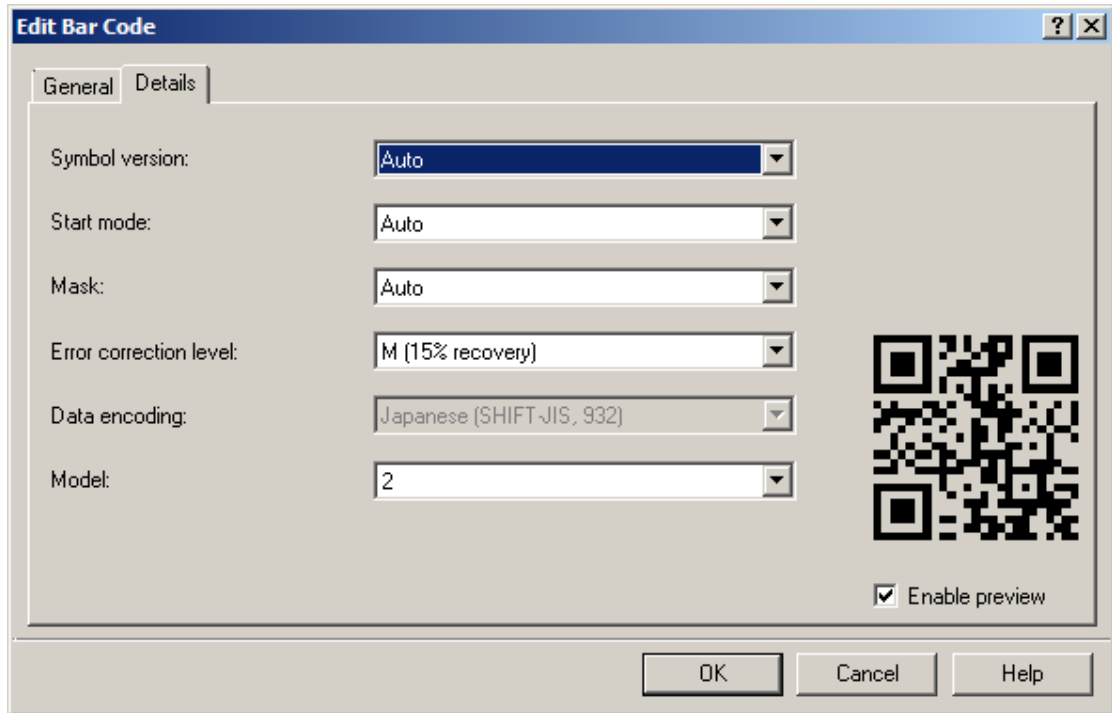


The “specification” includes still zone, landing article, and mirror image. Still zone means that you can add a protect zone surrounded the bar code to avoid absenting of it which result from too closing to the bar code side or other object during editing. “Landing Article” is apply to put the separate bar code below to the recognize bar code. Mirror image means that you can flip horizontally or vertically to the bar code.

The settings of two-dimensional code are different, take QR code as an example,

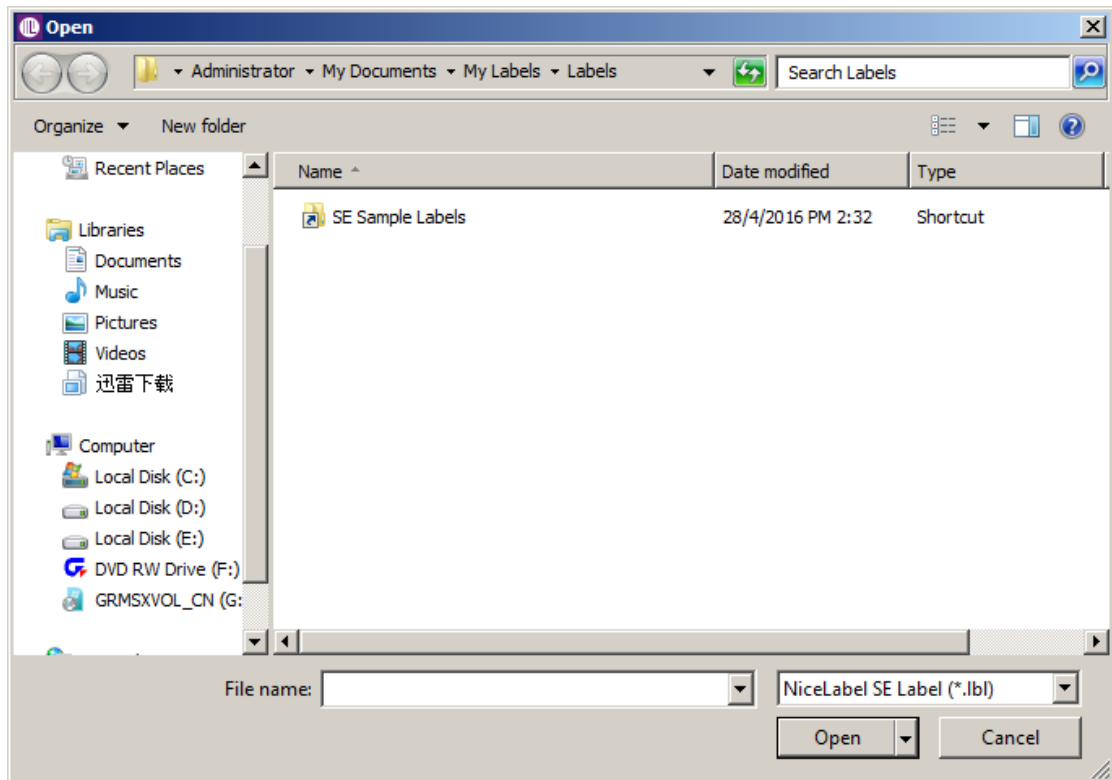


“X Expansion factor” can specify the size of the point, the larger the number the larger the image.



“Symbolic version” specify the density of the point; Start mode specify the type of the content; Error Correct Level specify QR code s Error correction rate, the higher the percent the higher the image; “The Mask” and “type” specifies the QR codes, encoding type.

There are different setting for different two-dimensional code, customer can adjust it as different encoding rule as what you need.

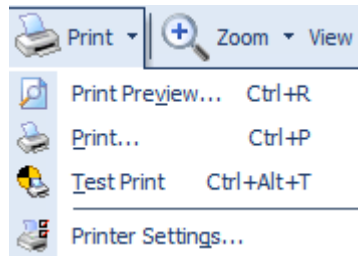


Click the picture, the mouse will become the image marking, click on the label editing then can open the document windows, choose the picture what you want to use, and adjust the size.

Rectangle, Line, Ellipse & Inverse, those four operation can be done in the label edit tab.



In the right side Design tab, there are objects aligning setting. You can chose the objects via mouse and align them. The aligning operations are as below, for lengthways, lift, middle & right. And for crosswise, top, middle and button. Also, there is grid aligning for objects. The next button is the objects rotating function. The last one is the edit tab rotating(90° CW)。

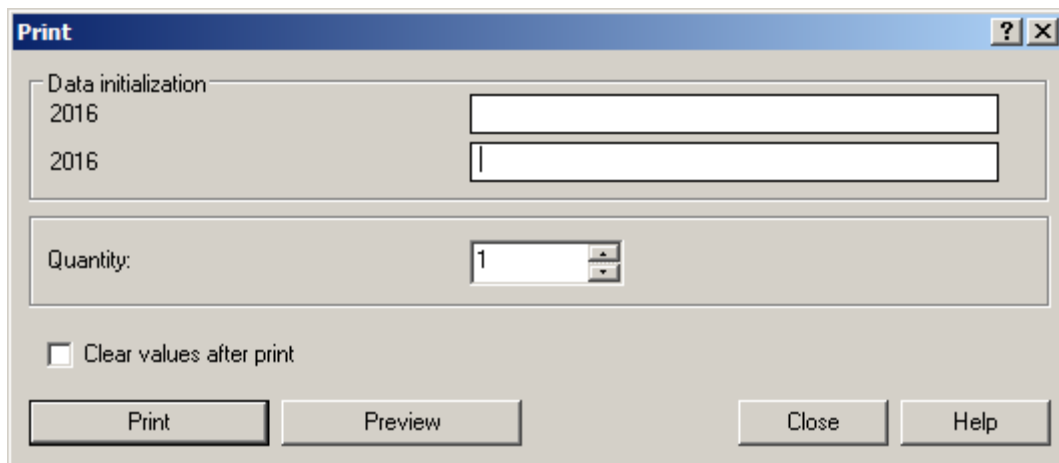


After editing, you can start to print the label. Operation as below,

1. Print preview
2. Test Print
3. Printer setup.

About the printing preference, please follow the “Driver barcode driver install course” .

When you press print, you will enter below tab,



Incremental value will come with the operation that chose Prompt numerical before printing in the counter.

Bar code content will come out will when you set the “Tip the variable text fields” in “Key type” .

Above two operations are intersected in printing guide. When you chose
“Remove a variable's value after printing” , it will clear the data after printing and it
will start counting from the beginning in next printing.

The operation guides are as above, enjoy yourself!