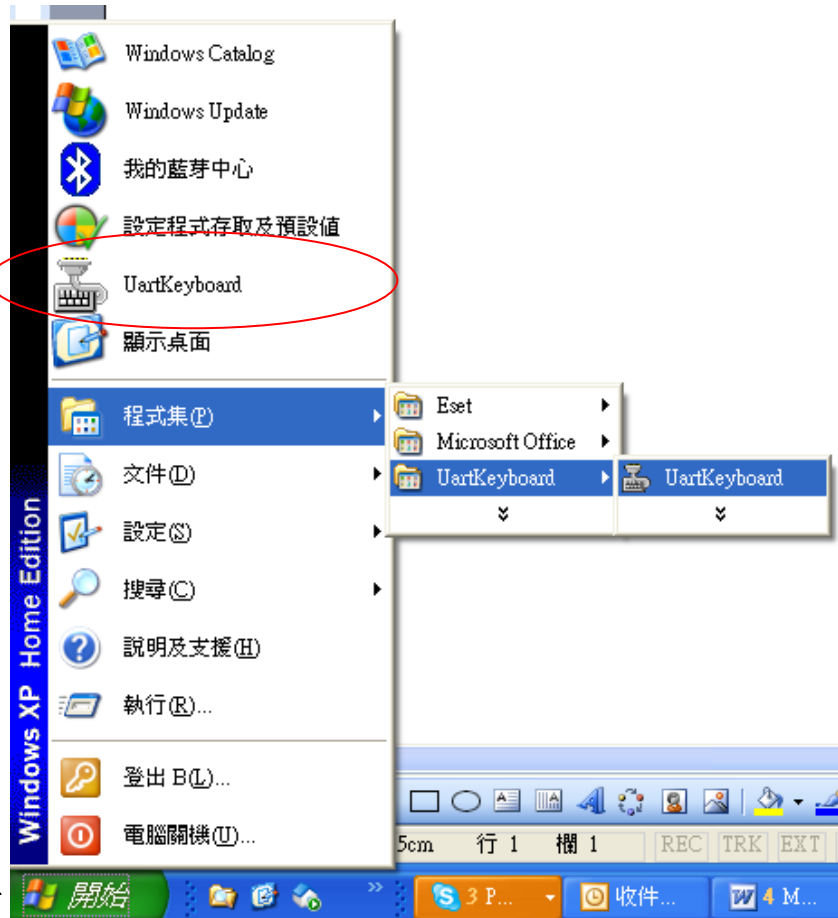


UART

If you prefer to use notepad or word file instead of hyper terminal to see the data. You may install the attached file-URATKEY and select the right COM port (should close the Hyper Terminal as they use same COM Port) then enter the user name and password from the ABOUT user name : USER
Password : BQVLDZZK.
Then the data will show on notepad or word.

1. Install UART driver first.
2. Go to **START** → **UART keyboard**

START

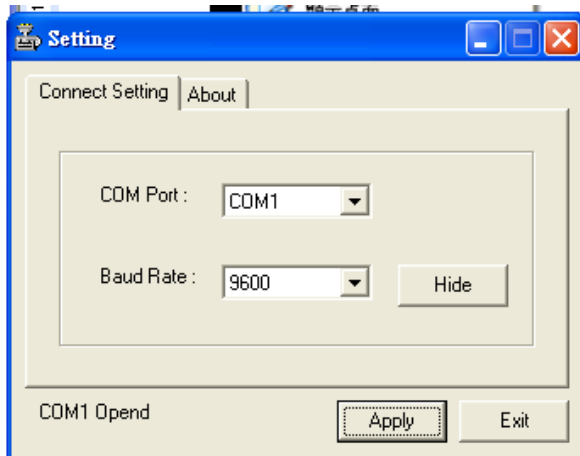


3.

4. After you open it. You may see the icon on your screen. Then click on **right hand side**. You will see setting.



5. Then click on setting your screen will show this info.



Set the COM port which your PC defines.